



CHUBB®

Terrorism Risk Evaluation Services

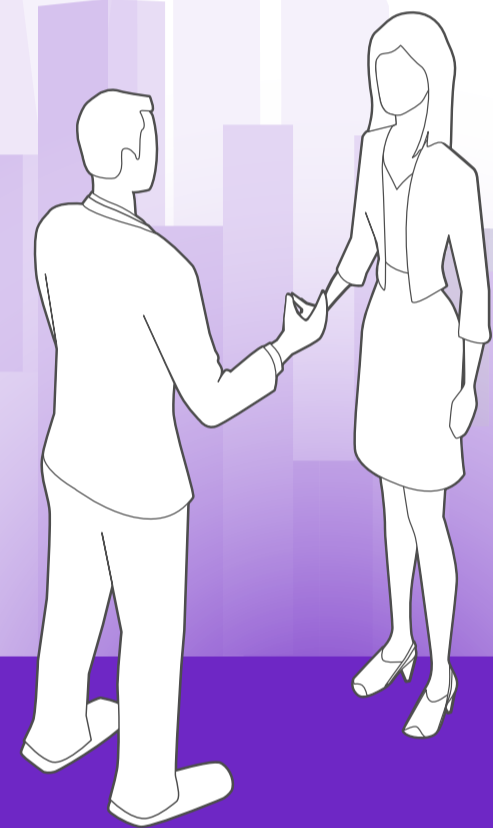
A unique proposition



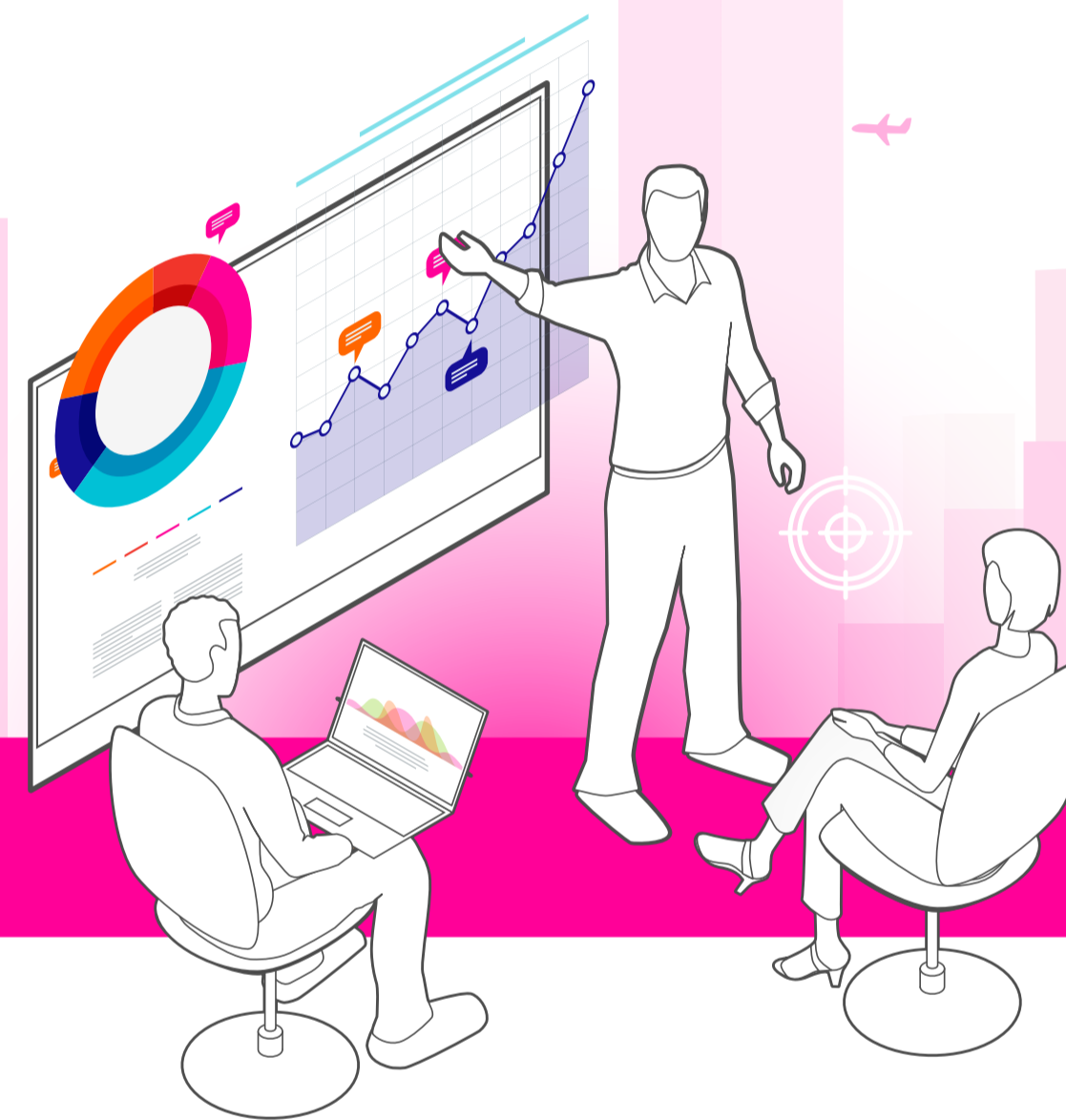
- Our clients told us they want to better understand the terrorism and political violence risks facing their business.
- We aligned our expertise and data across our Terrorism; Risk Engineering; Global Security; Catastrophe Modelling and Digital teams.
- We also invested in new technology and data modelling techniques.
- The result is a unique proposition to the insurance market - Terrorism Risk Evaluation Services - comparing global risk across a portfolio of properties or operating units.
- Helping our clients identify, better understand and mitigate against the risk of terrorism and political violence, no matter where they are in the world.

Working together: The client journey

• Client meets with Chubb Terrorism Underwriter



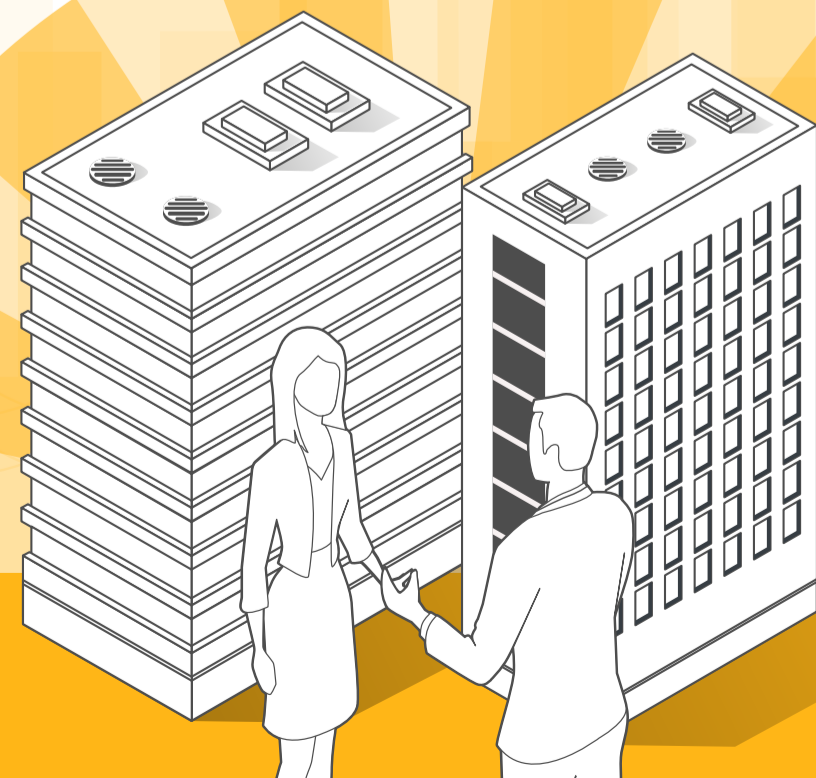
• Chubb experts assess client's portfolio across a number of areas



• Evaluation of country and location risk using real time data analytics



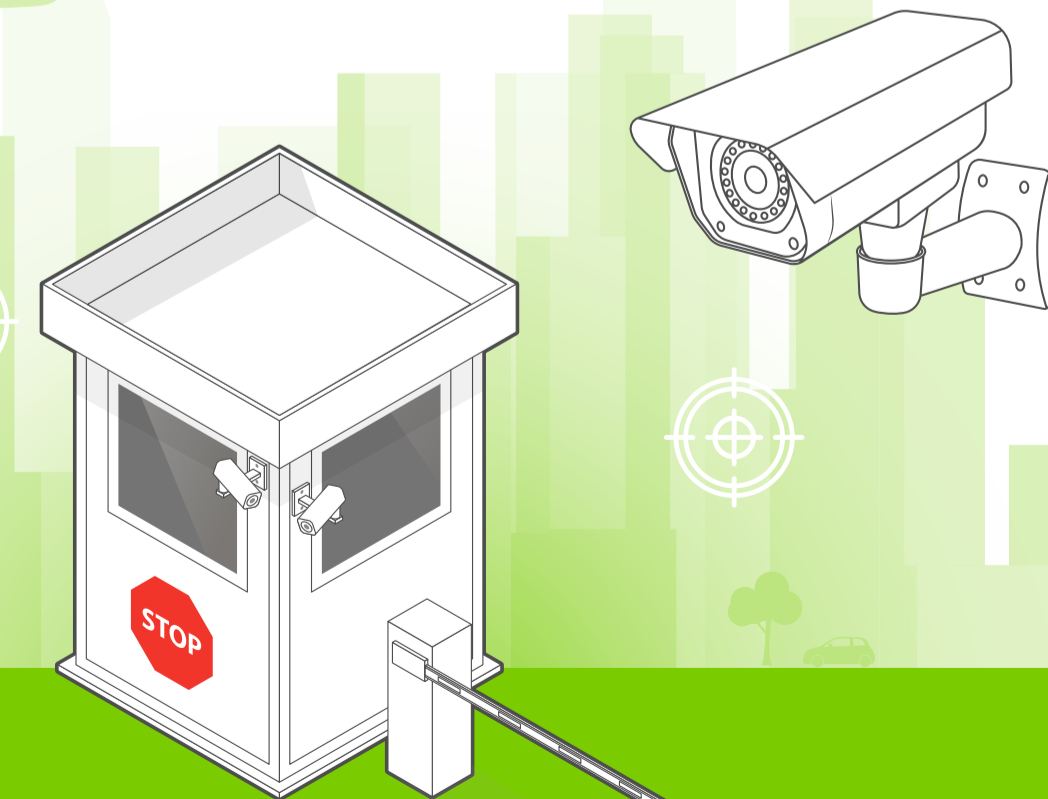
• Chubb Terrorism Underwriter presents analysis and advises on possible risk mitigation improvements and an appropriate insurance solution



• Review of current risk mitigation techniques



• Counter terrorism protective security assessments conducted by Chubb Risk Engineers



Terrorism and Political Violence



Local knowledge and underwriting expertise providing organisations with financial security against potential terrorist threat and political violence related perils



Real time analytics and risk consultancy provision



A market leader, underwriting terrorism and political violence since 2008



One of very few multi-line global insurers offering a full suite of property related perils including terrorism, political violence and conventional fire and CAT perils



Market leading capacity providers



An exceptional multinational proposition delivering local compliance



Support of Chubb's overseas network spanning 54 countries and territories



Flexible underwriting approach



Risk Engineering Services



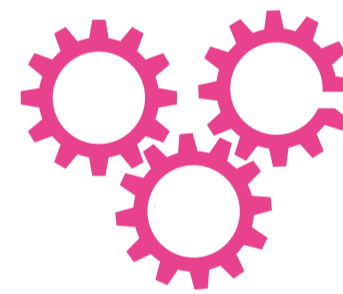
Forming part of a global network of more than 400 risk engineers



An internationally recognised group of experienced risk engineering professionals with multiple qualifications and accreditations



An average 20 years risk engineering experience per Engineer



Industry and technical expertise with knowledge of both local and global good practice standards and legislation

Data Analytics

In addition to Counter Terrorism Protective Security, we can measure and map using our data analytics capabilities.

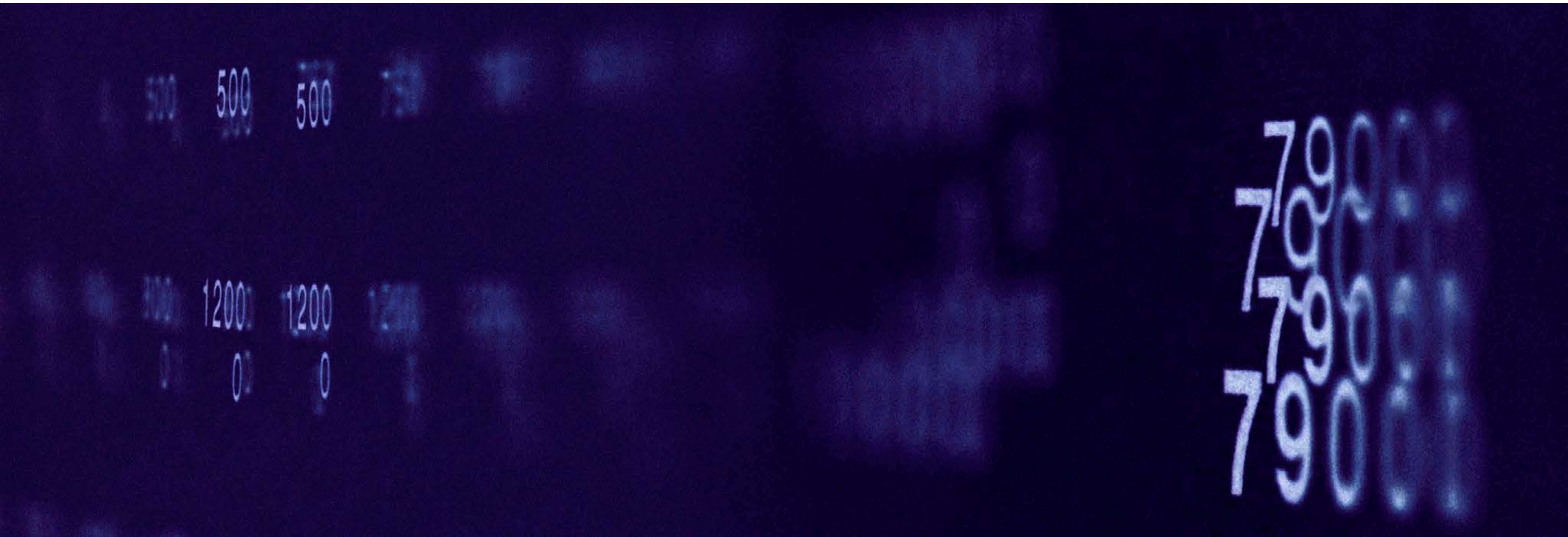
This service allows our clients to understand the potential terrorism, civil unrest and political violence risk facing their entire, global property portfolio.

Our real-time data and intelligence focuses at country or location-specific level, allowing us to forecast and identify terror and political violence risks no matter where in the world.

We can present data to a very detailed level and also show material changes year on year including specific peril analysis.

Examples of analysis we can provide:

- View of global risk - heat mapping
- Statistical based worldwide attacks and non-militant fatalities across the globe
- A risk score analysis of entire property portfolios
- Top location analysis and identifying potential terror targets within the vicinity of properties



The analysis

Our onsite risk evaluation analysis is undertaken across three categories



1. Risk identification

Our risk engineers will provide an assessment based on the occupancy, location and surrounding exposures.



2. Counter Terrorism Protective Security

A comprehensive and on-site security risk assessment. This is undertaken by a Chubb Risk Engineer and is based on the counter terrorism protective security methodology of deter, detect and delay including:

- Approach, perimeter and guarding
- Building fabric
- Access control
- CCTV, lightning and alarms
- General security planning



3. Mobile risk analytics

Working in conjunction with our external risk consultancy, the risk engineer will also provide a real-time, location specific risk score via GPS tracking technology. This also allows us to identify and report on potential terror targets within the vicinity.

In addition to onsite evaluation, our analytics capabilities enable us to measure and map data on a global basis to a granular level.

We can assess terrorism, political violence and civil unrest at a country and location-specific level, allowing us to forecast risk and identify terror targets no matter where in the world.

The output

The data is analysed and presented to the client in a comprehensive, bespoke report detailing the results of the survey, recommendations and a score across the three assessed areas.

Scores are derived from a series of individual assessments weighted in accordance to their criticality in order to reduce potential security breaches.

The report also offers:

- Industry benchmarking
- Long term data mining
- Clear visibility of the risks to the client's business and an understanding of how to mitigate them
- Opportunity to establish cost effective risk control solutions



Contact us

Contact Us

For more information, contact us at PropertyTerrorism.AP@chubb.com, or your local underwriter.

Chubb. Insured.[™]

This document is intended to provide only a general description of the products and associated services offered by Chubb. Any advice in this document is general only and does not take into account a potential purchaser's objectives, financial situation or needs, or the prevailing laws and regulations in the relevant jurisdictions. Please review the full terms, conditions and exclusions of the relevant policy(ies) and services, and consider whether the advice and services are right for you. Coverages are underwritten and services are provided by one or more Chubb companies.

Not all coverages and services are available in all countries. Coverages and services are subject to licensing requirements and sanctions restrictions. This document is neither an offer nor a solicitation of insurance, reinsurance products, or other associated services. Terms and conditions apply to the services offered by Chubb. Potential purchasers should contact their local broker or agent for advice.

© 2020 Chubb. Chubb® and its respective logos, and Chubb. Insured.[™] are protected trademarks of Chubb. Published 11/2020.